

**BALDOR® • RELIANCE** 

**Product Information Packet**

**UCL7510**

**7.5-10.5 AIR OVERHP,3450RPM,1PH,60HZ,215**

Part Detail							
Revision:	K	Status:	PRD/A	Change #:		Proprietary:	No
Type:	AC	Elec. Spec:	37WGZ089	CD Diagram:	CD0086A01	Mfg Plant:	
Mech. Spec:	37E767	Layout:	37LYE767	Poles:	02	Created Date:	03-05-2010
Base:	RG	Eff. Date:	07-17-2019	Leads:	2#8 A PH,2#14 B PH 32" from adapte		Y

Specs			
Catalog Number:	UCL7510	Inverter Code:	Not Inverter
Enclosure:	OPAO	KVA Code:	F
Frame:	215Z	Lifting Lugs:	Standard Lifting Lugs
Frame Material:	Steel	Locked Bearing Indicator:	Locked Bearing
Output @ Frequency:	7.500 HP @ 60 HZ	Motor Lead Quantity/Wire Size:	2 @ 8 AWG, A PH
	10.500 HP @ 60 HZ	Motor Lead Exit:	Pipe Or Pipe Adaptor
Synchronous Speed @ Frequency:	3600 RPM @ 60 HZ	Motor Lead Termination:	Flying Leads
Voltage @ Frequency:	230.0 V @ 60 HZ	Motor Type:	3729L
XP Class and Group:	None	Mounting Arrangement:	F1
XP Division:	Not Applicable	Power Factor:	82
Agency Approvals:	UR	Product Family:	General Purpose
	CSA	Product Type:	FARM DUTY
Auxillary Box:	No Auxillary Box	Pulley End Bearing Type:	Sealed Bearing
Auxillary Box Lead Termination:	None	Pulley Face Code:	Standard
Base Indicator:	Rigid	Pulley Shaft Indicator:	Tapped & Key
Bearing Grease Type:	Polyrex EM (-20F +300F)	Rodent Screen:	Included
Blower:	None	Shaft Extension Location:	Pulley End
Current @ Voltage:	37.000 A @ 230.0 V	Shaft Ground Indicator:	No Shaft Grounding

<b>Design Code:</b>	L	<b>Shaft Rotation:</b>	Reversible
<b>Drip Cover:</b>	No Drip Cover	<b>Shaft Slinger Indicator:</b>	No Slinger
<b>Duty Rating:</b>	CONT	<b>Speed Code:</b>	Single Speed
<b>Electrically Isolated Bearing:</b>	Not Electrically Isolated	<b>Motor Standards:</b>	NEMA
<b>Feedback Device:</b>	NO FEEDBACK	<b>Starting Method:</b>	Direct on line
<b>Front Face Code:</b>	Standard	<b>Thermal Device - Bearing:</b>	None
<b>Front Shaft Indicator:</b>	None	<b>Thermal Device - Winding:</b>	Normally Closed Thermostat
<b>Heater Indicator:</b>	No Heater	<b>Vibration Sensor Indicator:</b>	No Vibration Sensor
<b>Insulation Class:</b>	F	<b>Winding Thermal 1:</b>	None
		<b>Winding Thermal 2:</b>	None

<b>Nameplate NP1279L</b>											
<b>CAT.NO.</b>	UCL7510										
<b>SPEC.</b>	37E767Z089G1										
<b>HP</b>	7.5-10.5 AIR OVER										
<b>VOLTS</b>	230										
<b>AMP</b>	37-46										
<b>RPM</b>	3450										
<b>FRAME</b>	215Z				<b>HZ</b>	60		<b>PH</b>	1		
<b>SER.F.</b>	1.00			<b>CODE</b>	F		<b>DES</b>	L		<b>CL</b>	F
<b>NEMA-NOM-EFF</b>	81			<b>PF</b>	82						
<b>RATING</b>	40C AMB-CONT										
<b>CC</b>								<b>USABLE AT 208V</b>			
<b>DE</b>	6307			<b>ODE</b>	6206						
<b>ENCL</b>	OPAO			<b>SN</b>							

<b>Nameplate NP1263L</b>	
<b>CAT.NO.</b>	UCL7510
<b>SPEC.</b>	37E767Z089G1
<b>HP</b>	7.5-10.5 AIR OVER
<b>VOLTS</b>	230
<b>AMP</b>	37-46
<b>RPM</b>	3450
<b>FRAME</b>	215Z
<b>SER.F.</b>	1.00
<b>NEMA-NOM-EFF</b>	81
<b>RATING</b>	40C AMB-CONT
<b>CC</b>	
<b>DE</b>	6307
<b>ENCL</b>	OPAO
<b>CODE</b>	F
<b>PF</b>	82
<b>ODE</b>	6206
<b>SN</b>	
<b>HZ</b>	60
<b>DES</b>	L
<b>CL</b>	F
<b>PH</b>	1
	USABLE AT 208V

Parts List		
Part Number	Description	Quantity
SA191802	SA 37E767Z089G1	1.000 EA
RA179460	RA 37E767Z089G1	1.000 EA
EC1216C06SP	ELEC CAP, 216-259 MFD, 250V, 2.06D X 4.	2.000 EA
HW3200A01	3/8-16X3/4 I-BLT WELDED F/S	1.000 EA
HA6011A01	ADAPTOR, MACH	1.000 EA
51XF2520A08	SCREW, HEX SER SLT HD, ZN 1/4-20 X .50 L	2.000 EA
11XW1032G06	10-32 X .38, TAPTITE II, HEX WSHR SLTD U	1.000 EA
HW3001B01	BRASS CUP WASHER, FOR #10 SCREW	1.000 EA
37EP3203C00	MASTER,ODE,206 BRG,2 GREASERS	1.000 EA
HW4500A19	1/4-28X1/4 SLOTTED PLUG F/S	2.000 EA
HA1104A01	RODENT SCREEN 37 FRAME 206 BRG FRONT END	1.000 EA
51XW1032A06	10-32 X .38, TAPTITE II, HEX WSHR SLTD S	4.000 EA
HW1000A10	#10 FLAT WASHER (SAE)	4.000 EA
SP1008A01	BAFFLE, MODEL 36 & 37	1.000 EA
13XF0832A08	8-32 X.50 PAN HD,SLTD, TYPE F SCREW, ZIN	2.000 EA
35CB4802A02SP	CAPACITOR COVER, STAMPED X	2.000 EA
51XB1016A05	10-16X5/16HX WA SL SR TYB (F/S)	4.000 EA
HW5100A06	W2420-025 WVY WSHR (WB)	1.000 EA
37EP3204C00	MASTER,DE,307 BRG,2 GREASERS,LOCKED BEAR	1.000 EA
HW4500A19	1/4-28X1/4 SLOTTED PLUG F/S	2.000 EA
HA1104A05	RODENT SCREEN 37 FRAME 207 BRG PULLEY EN	1.000 EA
51XW1032A06	10-32 X .38, TAPTITE II, HEX WSHR SLTD S	2.000 EA
HW1025A10	#10 BALANCE WASHER (SPL)	2.000 EA
10XN2520A28	1/4-20X 1 3/4 HEX HD	4.000 EA

Parts List (continued)		
Part Number	Description	Quantity
HW1001A25	LOCKWASHER 1/4, ZINC PLT .493 OD, .255 I	4.000 EA
XY3118A12	5/16-18 HEX NUT DIRECTIONAL SERRATION	4.000 EA
HA7000A02	KEY RETAINER RING, 1 1/8 DIA, 1 3/8 DIA	1.000 EA
LB1115N	LABEL,LIFTING DEVICE (ON ROLLS)	1.000 EA
LB1001	LABEL, GREASE-EXXON POLYREX EM	1.000 EA
85XU0407S04	4X1/4 U DRIVE PIN STAINLESS	2.000 EA
MJ1000A02	GREASE, MOBIL POLYREX EM - 124047	0.050 LB
HW2501E26	KEY, 1/4 SQ X 3.000	1.000 EA
MG1025C02	WILKOFASST SG, 787.105, TAN	0.028 GA
LD5000B36	LEAD ASSY, ML1400DF08 W/#10 RING 37"	1.000 EA
WD1000A15	3-520132-2 AMP FLAG (4M/RL NON-CANC/NON-	4.000 EA
SP5172A10	TORQ MODEL 37 TYPE LC SPLIT CAPS,	1.000 EA
HA3104A14	THRUBOLT- 5/16-18 X12.125(OHIO)	4.000 EA
LB1119N	WARNING LABEL	1.000 EA
LC0086	CONNECTION LABEL	1.000 EA
NP1279L	ALUM FARM DUTY UL CSA CC	1.000 EA
NP1263L	AUX, GP, ALUM, CC, LASER ETCHED	1.000 EA
G0PA1000	PKG GRP, PRINT PK1026A06	1.000 EA
MN416A01	TAG-INSTAL-MAINT no wire (1200/bx) 3/19	1.000 EA
PE-0000001	ZRTG PE ASSEMBLY	1.000 EA
FE-0000001	ZRTG FE ASSEMBLY	1.000 EA

<b>Accessories</b>		
<b>Part Number</b>	<b>Description</b>	<b>Multiplier</b>
37-1404	C FACE KIT	A8

**AC Induction Motor Performance Data**

Record # 12684 - Typical performance - not guaranteed values

<b>Winding:</b> 37WGZ089-R001	<b>Type:</b> 3729L	<b>Enclosure:</b> OPAO
-------------------------------	--------------------	------------------------

Nameplate Data				230 V, 60 Hz: Single Voltage Motor	
Rated Output (HP)	7.5-10.5 AIR OVER			Full Load Torque	15.8 LB-FT
Volts	230			Start Configuration	direct on line
Full Load Amps	37-46			Breakdown Torque	36 LB-FT
R.P.M.	3450			Pull-up Torque	16 LB-FT
Hz	60	Phase	1	Locked-rotor Torque	17 LB-FT
NEMA Design Code	L	KVA Code	F	Starting Current	205 A
Service Factor (S.F.)	1			No-load Current	25.7 A
NEMA Nom. Eff.	81	Power Factor	82	Line-line Res. @ 25°C	0.194 Ω A Ph 0.743 Ω B Ph
Rating - Duty	40C AMB-CONT			Temp. Rise @ Rated Load	

Load Characteristics 230 V, 60 Hz, 10.5 HP

% of Rated Load	25	50	75	100	125	150
Power Factor	46	65	76	82	85	86
Efficiency	64.8	76	79.3	79.8	78.7	76.3
Speed	3570	3544	3515	3583	3444	3397
Line amperes	28.5	34.3	42.2	52	63.6	77.5

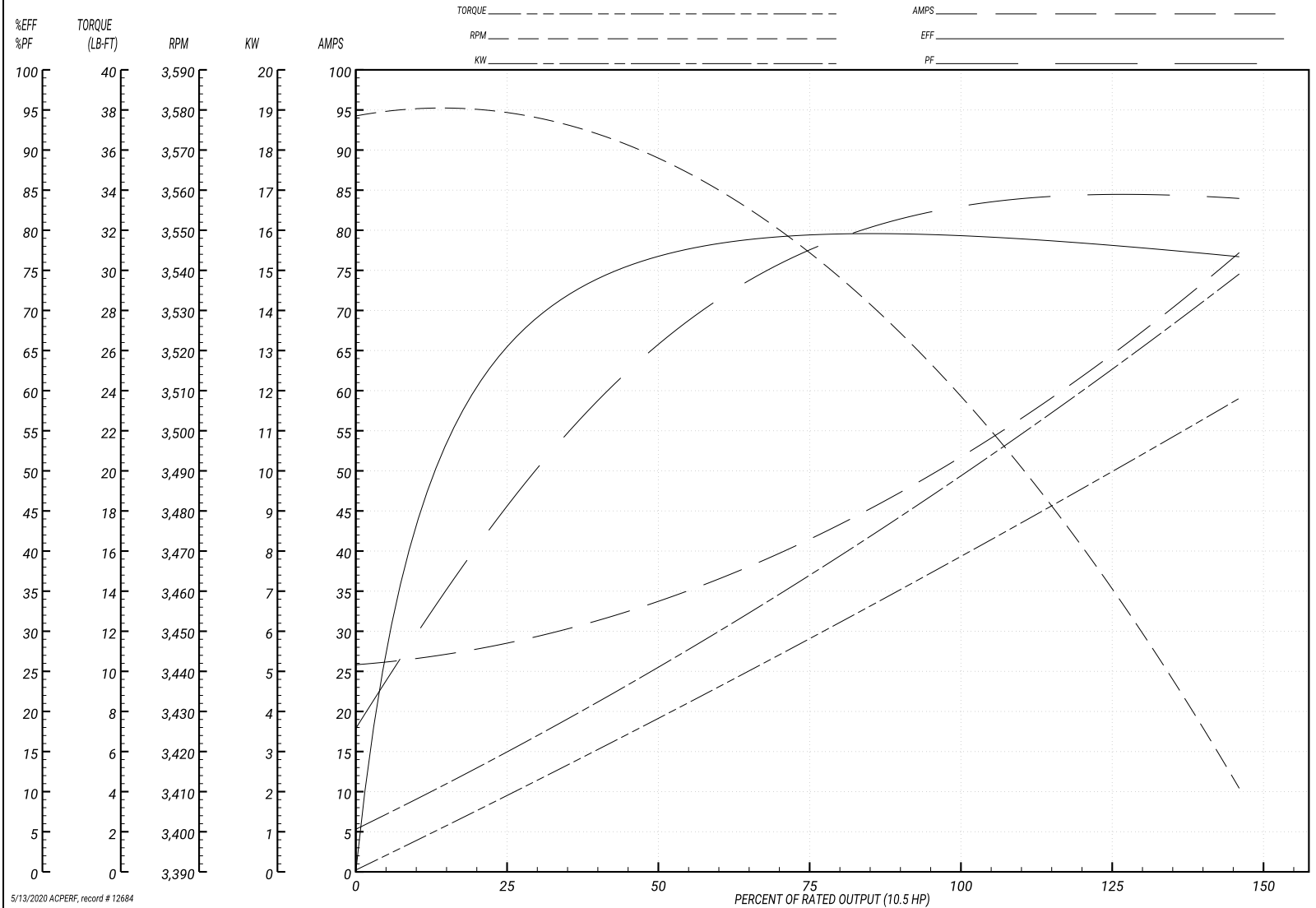
Performance Graph at 230V, 60Hz, 10.5HP Typical performance - Not guaranteed values

ABB Motors and Mechanical Inc.

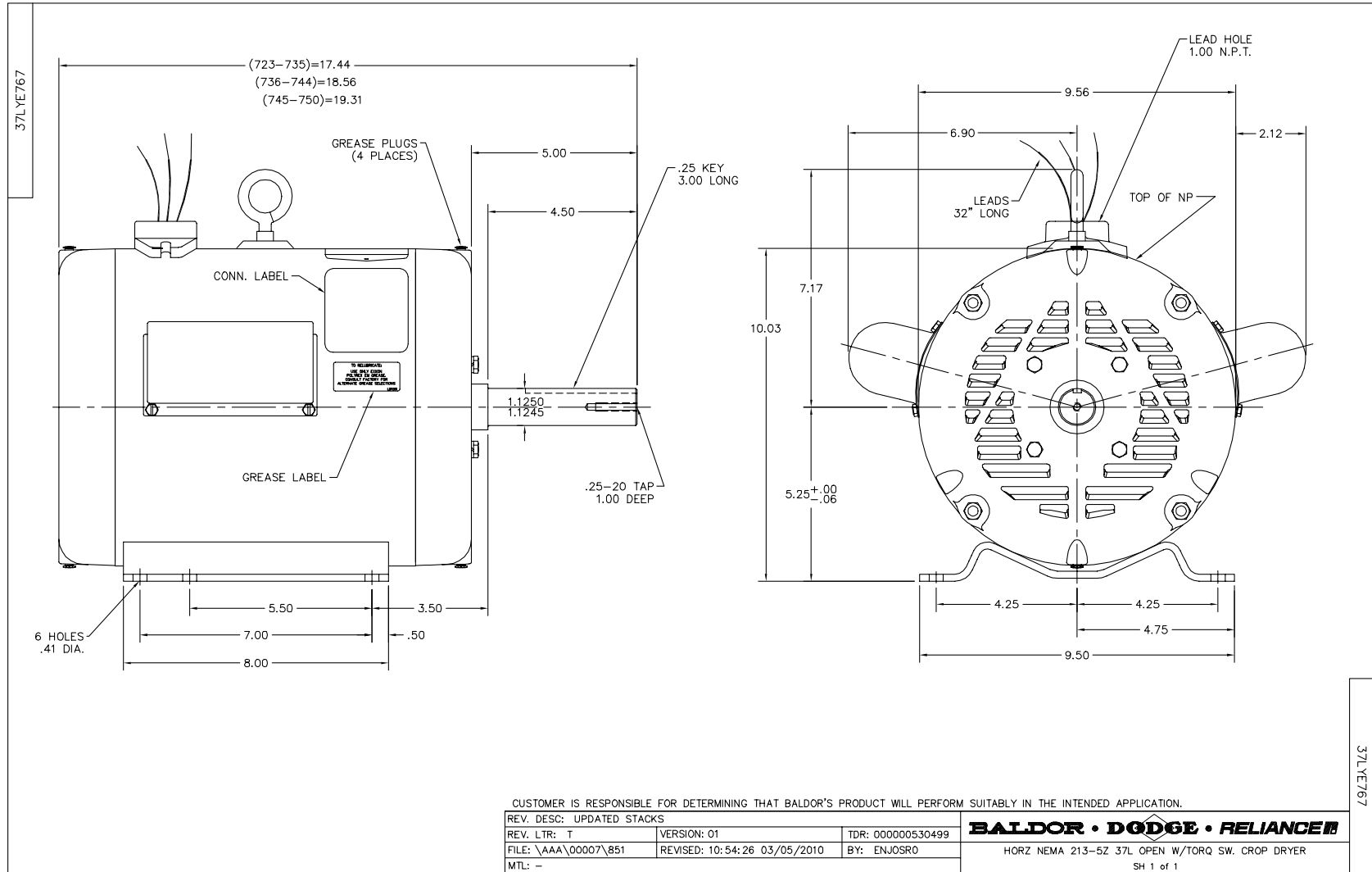
WINDING # 37WGZ089

Typical performance - not guaranteed values.

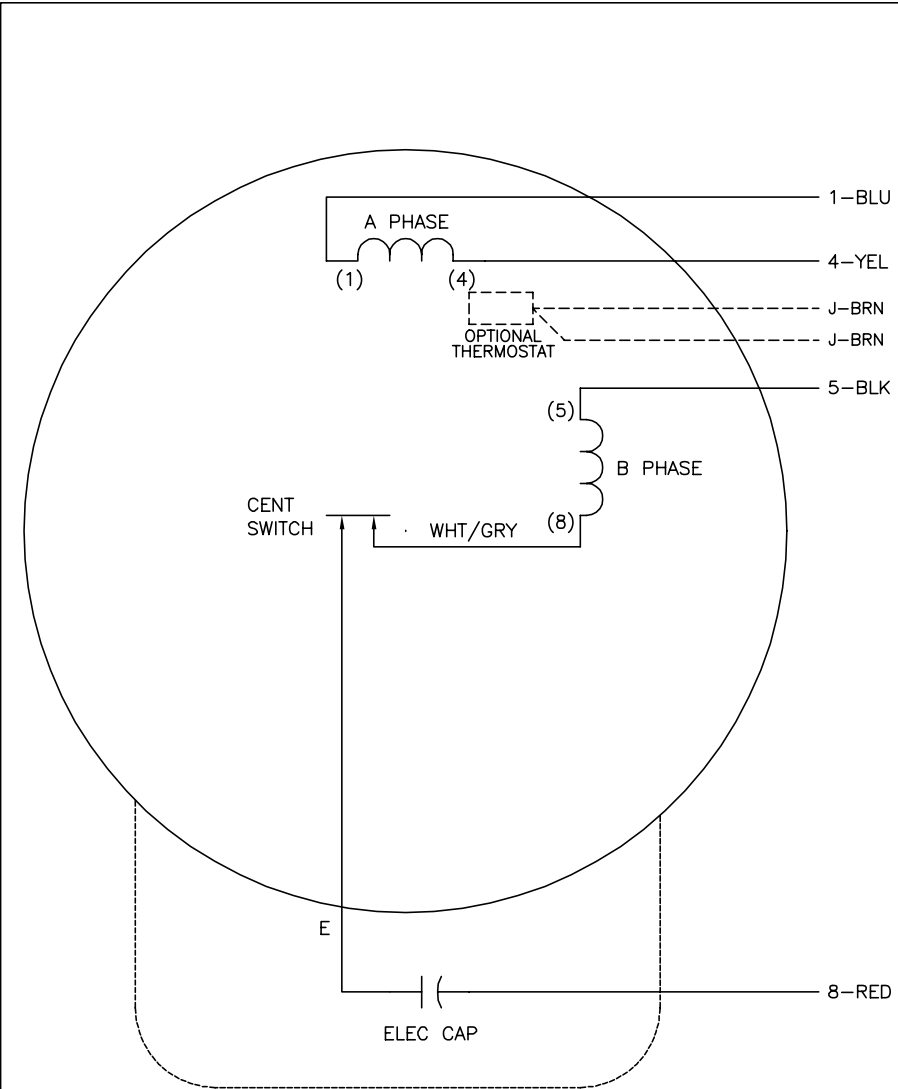
10.5 HP 1 PH 60 HZ 3450 RPM 230 V 3729L  
 TORQUES(LB-FT): PO=36 PU=16 LR=17 LRA=205



5/13/2020 ACPERF, record # 12684



CD0086A01



	LINE A	LINE B
STD	1,8	4,5
OPP	1,5	4,8

- NOTES:
1. STANDARD ROTATION IS CCW FACING END OPPOSITE SHAFT EXTENSION.
  2. OPTIONAL THERMOSTAT IS PROVIDED WHEN SPECIFIED.
  3. MULTIPLE CAPACITORS ARE CONNECTED IN PARALLEL UNLESS OTHERWISE SPECIFIED.
  4. CAPACITORS MAY BE SEPERATELY MOUNTED.
  5. LEAD COLORS ARE OPTIONAL. LEADS MUST ALWAYS BE NUMBERED AS SHOWN.

REV. DESC: NEW, REPLACE CD0086 ON TYPE L MOTORS		
REV. LTR: -	VERSION: 00	TDR: 000000378161
10V980000	FILE: \AAA\00131\051	REVISED: 10:21:26 10/28/2005
	MTL: -	BY: ENJOEPO

**BALDOR ELECTRIC Co.**

TYPE L, SV, REV, 4 LEADS, CAPS MAY BE SEP MTD

CD0086A01